



FlexoTec^{GmbH}



FlexoTop[®]

THE
HIGH
PERFORMANCE
GLASS

QUICK START GUIDE

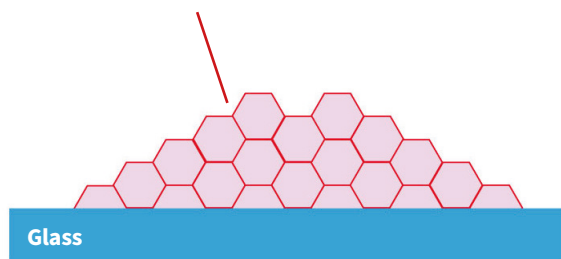
FlexoTop® HighPerformance Glass. Protection Twice - For A Lifetime!

Glass is a noble but also very sensitive material. Dirt of all kinds in daily use can cause lasting damage to the glass surface. Corrosion leads to increasingly difficult cleaning and even to a severe reduction in transparency. Shower glass is exposed to this constant stress.

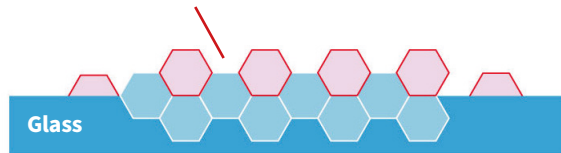
DIRT ON THE GLASS LEADS TO DIRT IN THE GLASS!

Despite constant cleaning, glass corrosion can hardly be avoided. With regularly cleaning a damage of the glass surface from dirt dissolved in water can be avoided. This high cleaning effort also has the disadvantage that the surface is constantly exposed to mechanical and chemical stresses.

Water on untreated glass ...



... leads to damages in the untreated glass ...



... ending up in glass corrosion!

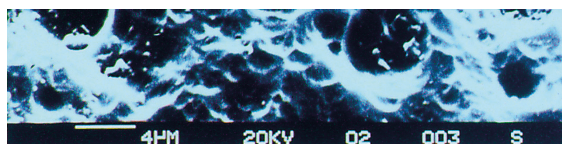
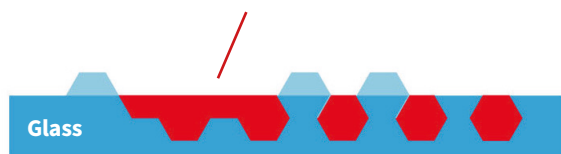
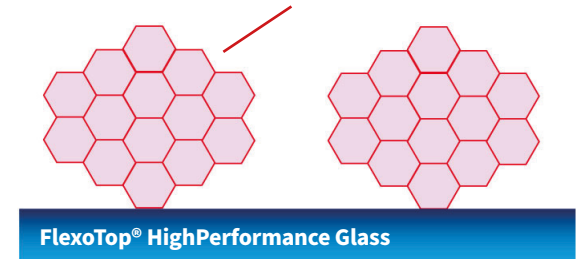


Fig.: Glass corrosion under the electron microscope!

CORROSION PROTECTION AND EASY TO MAINTAIN!

FlexoTop® HighPerformance Glass is water and dirt repellent. This means that most of the water with the dirt dissolved in it is repelled from the surface and transported away.

Water on FlexoTop® HighPerformance Glass ...



... rolls off the surface in large parts ...



Dryings cannot harm the surface and, thanks to the unique properties of the surface, it can be removed with a microfibre cloth without the use of aggressive cleaners.



FlexoTop® HighPerformance Glass provides lasting protection against corrosion. Dirt can be removed easily - without the use of aggressive cleaners.

FlexoTop® HighPerformance Glass has been successfully on the market for more than two decades. Its properties have been tested and confirmed by independent laboratories

Application

1. Pre-Treatment

FlexoTop® Primer is designed as an activator of the glass surface.

1. Remove coarse soiling as usual
2. Spray on FlexoTop® Primer and polish into the surface with a red cloth.
2. The surface is clean and activated when there are no streaks visible during the polishing.

The surface should be sealed immediately after the pre-treatment with FlexoTop® GlasPlus. If a washing machine is used, pre-treatment may not be necessary.

2. Sealing

1. Spray FlexoTop® GlasPlus onto activated surface and apply in small segments overlapping with blue cloth.
2. Ensure that the entire surface is coated.
3. Remove excess material with blue cloth by polishing without leaving any residue

The coated glasses can be processed, packed or stored immediately. The optimum properties are achieved after 24 hours.

FlexoTop® GlasPlus: coverage approx. 120 sqm per litre.
Not suitable for absorbent surfaces (e.g., stone, marble, granite), metals or frosted glass.

Quality Standards

The requirements for high-quality surface protection are extremely high due to the expected permanent stress. The test specifications are correspondingly high. Tests by neutral institutes and constant product quality monitoring give the customer the security for durability and functionality.

FlexoTop® has been present as a surface protection system on the professional and industrial market for over 20 years. Its properties have been tested and confirmed by independent laboratories.

Warranty declaration

Stability of the surface protection for at least 10 years when applied professionally and when the care instructions are observed.

FlexoTop® HighPerformance Glass is characterised by:

- Easy-to-clean properties
- Chemical resistance
- UV stability
- Enormous abrasion resistance
- Hydrophobicity
- Dirt resistance
- Anti-Fingerprint properties
- Food safe
- PFAS free
- High coverage (120 sqm per litre)

Maintenance of FlexoTop® HighPerformance Glass

An efficient after-care programme is available for FlexoTop® HighPerformance Glass. Damage on the surface protection due to improper use can be repaired with the FlexoTop® system at any time. It is therefore essential to avoid the use of the following very aggressive cleaning agents, which can scratch surfaces and thus damage the surface protection: Abrasive milk or scouring powder, highly concentrated drain cleaners, tap and steel cleaners, powdered toilet cleaners and cleaners with pH values below 0.5 and above 10. Surface-damaging or abrasive cleaning devices must also not be used.

That's how shower works today:

1

Construction of Glass with Smart-Builder

2

Apply Surface Protection System

3

Assembly with Poseidon Shower Fittings



FlexoTEC^{GmbH}