

## Determination of SILVERSTAR glazing characteristics

Version information:  
 Program 3.10  
 Database 3.55  
 Output format 3.21

The following characteristics are calculated with the program SILVERSTAR glaCE.

Project: 6EFSEN2P4EF4EFSEN2P

Company: Interglas

Employee: LA

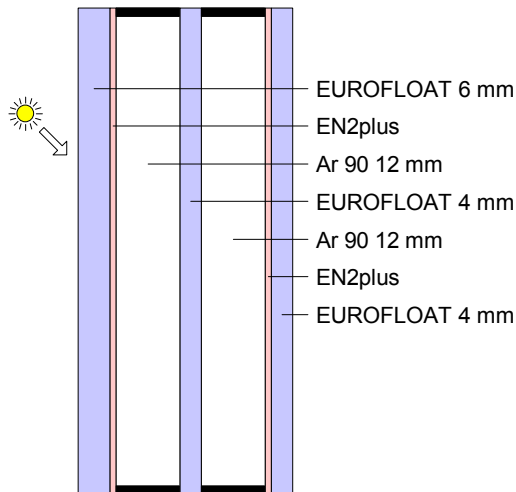
Customer:

Product:

Date: 26.02.2021


### Glazing:

Window tilt angle: 90 °



### Comments:

### Calculated glazing characteristics:

Thermal transmittance Ug:	0.7166 W/m <sup>2</sup> K	EN 673:2011	
Total solar energy transmittance (solar factor g):	51.398 %	EN 410:2011	
Light transmittance:	73.302 %		
Light reflectance (outside):	14.362 %		
Light reflectance (inside):	14.460 %		
Light absorptance:	12.337 %		
Solar direct transmittance:	43.925 %		
Solar direct reflectance (outside):	26.909 %		
Solar direct absorptance:	29.167 %		
Secondary internal heat transfer factor:	7.473 %		
UV-Transmittance:	15.319 %		
UV-Reflectance:	20.760 %		
UV-Absorptance:	63.921 %		
General colour rendering index (transmission):	95.942		
Selectivity (light transmittance / solar factor g):	1.4262		
Shading coefficient (solar factor g / 0.87):	59.078 %		
Shading coefficient (solar factor g / 0.8):	64.247 %		

The values given are only indicative and subject to change without notice.  
 They do not represent any guarantee for the performance of the glazing  
 Calculations are performed according to the European standards EN 410:2011 and EN 673:2011.